

# An Dro

FABULA Version

trad. Bretagne

Brücke & arr. Brian Haase

♩ = 98

A

Section A consists of two staves of music. The first staff begins with a treble clef, a 4/4 time signature, and a repeat sign. The melody is written in a single line with eighth and sixteenth notes. The second staff continues the melody and ends with a double bar line and repeat dots.

B1

Section B1 consists of two staves of music. The first staff continues the melody from the previous section. The second staff continues the melody and ends with a double bar line and repeat dots.

B2

Section B2 consists of two staves of music. The first staff continues the melody. The second staff continues the melody and ends with a double bar line and repeat dots.

C

Section C consists of a single staff of music. It begins with a treble clef, a 4/4 time signature, and a repeat sign. The melody is written in a single line with eighth and sixteenth notes. It ends with a double bar line and repeat dots.

D1

Section D1 consists of two staves of music. The first staff continues the melody. The second staff continues the melody and ends with a double bar line and repeat dots.

D2

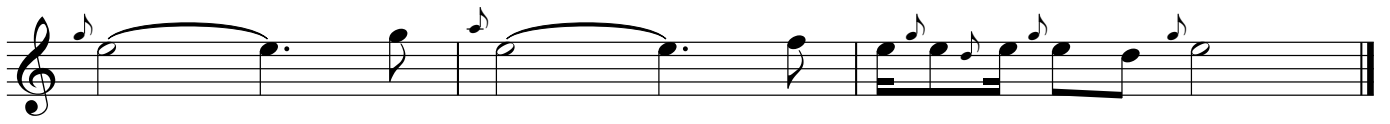
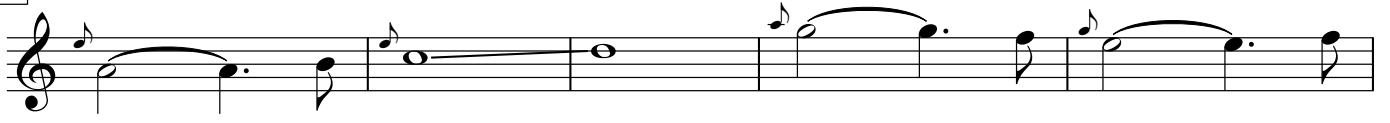
Section D2 consists of a single staff of music. It continues the melody from the previous section and ends with a double bar line and repeat dots.

# An Dro FABULA Version

gehaltenes G nur bei folgender Brücke  
ansonsten A spielen auf Schlag 4



Brücke



Original-Version

A



B



C



D

